

IN-SINK-ERATOR

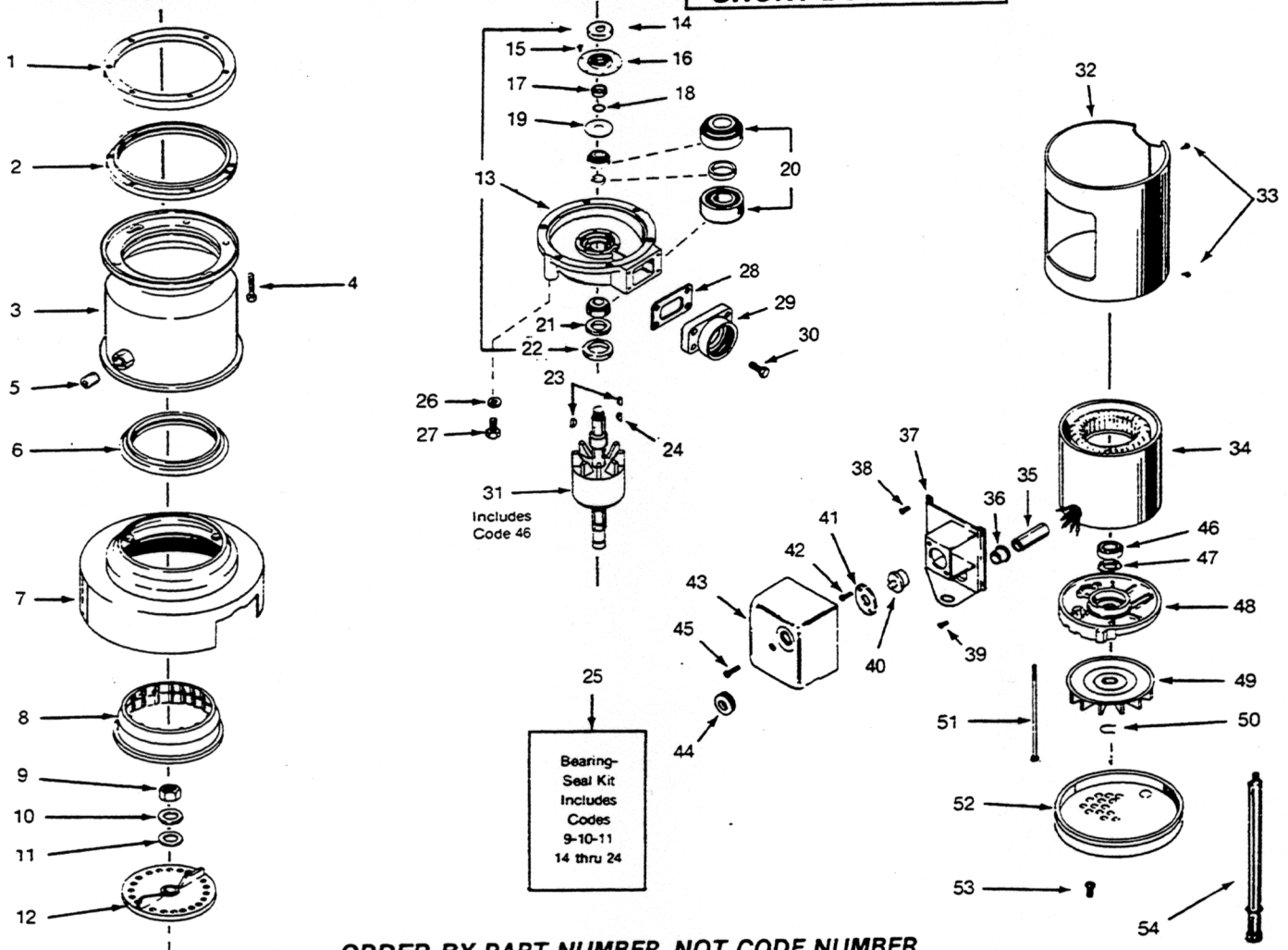
COMMERCIAL DISPOSER MODEL NO. SS300-27

U.S.A.
(208-230/460/60/3φ)

Start Date:
5/88
Engineer Number:
13389B

SHORT BODY UNIT

3 H.P.



ORDER BY PART NUMBER, NOT CODE NUMBER

CODE NO.	PART NO.	NO. REQ.	DESCRIPTION	CODE NO.	PART NO.	NO. REQ.	DESCRIPTION
1	11004	1	Flange, Mounting	28	11457	1	Gasket, Tailpipe
2	11016	1	Gasket, Mounting	29	11456	1	Flange, Tailpipe
3	11232-B	1	Body Assy, Upper	30	3130	4	Screw, Tailpipe
4	1491	6	Screw, Mounting	31	13270	1	Rotor & Shaft Assy (Incl Codes 46)
5	11227	1	Pipe Plug	32	11721	1	Trim, Band
6	11008	1	Gasket, Shredder	33	1836-A	2	Screw
7	11725	1	Body & Cover Assy	34	13079	1	Stator Assy
8	11250	1	Shredder, Stationary	35	12357	1	Insulation Tubing
9	11255	1	Nut	36	12384	1	Bushing
10	11256	1	Washer	37	12433-A	1	Bracket (Terminal Box)
11	12143	1	Washer, Fiber	38	11448	4	Screw
12	13273	1	Shredder Assy, Rotor	39	2466-A	1	Screw, Ground
13	13320	1	End Bell Assy, Upper (Incl Codes 9 - 11 & 14 - 24)	40	13422-AP	1	Overload, Protector
14	13266	1	Shield	41	12378	1	Clamp, Overload
15	1269	12	Screw, Tapping	42	5765	2	Screw, Tapping
16	13260	1	Seal Assy	43	12372	1	Box, Terminal
17	13265	1	Sleeve, Spacer	44	12383	1	Grommet, Overload
18	12859	1	O-Ring	45	12381	1	Screw
19	11729	1	Slinger	46	12415	1	Bearing
20	12638	1	Bearing Assy, Upper	47	12399	1	Washer, Spring
21	11821	1	Washer, Thrust	48	11672	1	End Frame, Lower
22	11769	1	Seal, Water & Oil	49	12395	1	Fan
23	11320	2	Key, Woodruff	50	12635	1	Ring, Retaining
24	11322	1	Key, Woodruff	51	8039	4	Bolt, Thru
25	13281	1	Bearing Seal Kit (Incl Codes 9 - 11 & 14 - 24)	52	11748	1	Cover, Bottom
26	11444	6	Washer, Lock	53	7887	3	Screw
27	11524	6	Screw	54	11757-A	3	Tube Assy, Foot